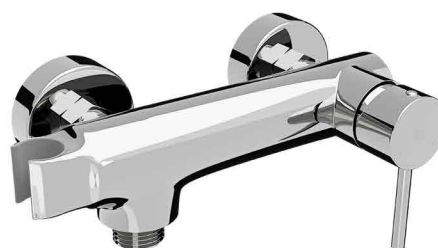
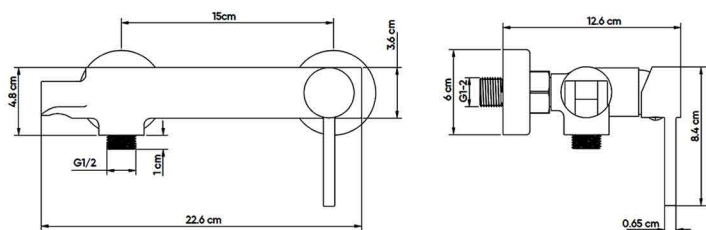


## HATCH EXPOSED MIXERS

**Product Name: EXPOSED SHATTAF / SHOWER MIXER**  
**Model Number: HAT-MX055**



### AVAILABLE COLORS



**GLOSSY CHROME**  
SW-60196802



**MATTE BLACK**  
SW-60196803



**BRUSHED NICKEL**  
SW-60196804



**GLOSSY GOLD**  
SW-60196805



**BRUSHED GOLD**  
SW-60196806



**BLACK TITANIUM**  
SW-60196807

### DESCRIPTIONS

**Material:** Brass main body, frame material: Stainless steel (SUS 304)  
**Shape:** Round  
**Packaging unit:** 1 piece

### DIMENSIONS

22.6 x 12.6 x 8.4 CM

### TECHNICAL SPECIFICATION

Maximum Flow rate at 3 bar: 13.5 L/min  
 Maximum operating pressure: 15 bar  
 Mounting type: Exposed  
 Connection size: G 1/2 in  
 Decorative ring thickness: 0.8 mm  
 Ceramic cartridge  
 Non-return valve: Yes  
 Non-scratch protector: Yes  
 Distance between water supply hole: 15 cm ± 1.2 cm  
 Uses as: Shattaf Mixer and Shower Mixer

### APPLICATIONS

Bathroom

### BOX COMPONENTS

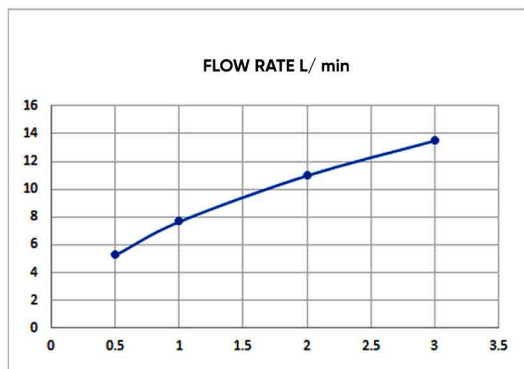
- Brass Mixer
- Handle
- (SUS 304) Frame
- (SUS 304) S-union sets
- Silicon & Rubber
- Non-return valve
- Allen key

### COUNTRY OF ORIGIN

Made in China for HATCH Sanitary

### WARRANTY

7 years against manufacturing defects  
 2 years for surface and accessories



### HATCH SANITARY

Hatch Sanitary is a trademark owned by MHG

Old Al Kharj Road, Building No. 3533  
 Riyadh 14511 - 8305  
 Kingdom of Saudi Arabia

© info.mhg@marketing-home.com

☎ 800 122 2230