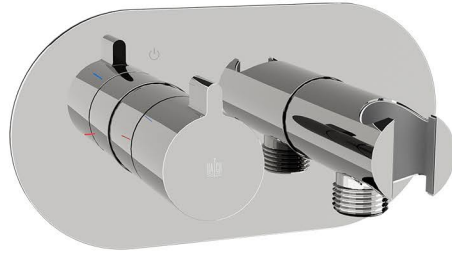
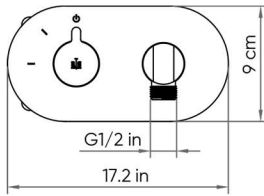
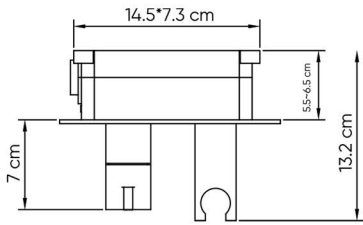


HATCH SHATTAF MIXERS

Product Name: WALL-MOUNTED SHATTAF MIXER

Model Number: HAT-MX096



AVAILABLE COLORS



GLOSSY CHROME
SW-60198717



MATTE BLACK
SW-60198718



BRUSHED NICKEL
SW-60198719



GLOSSY GOLD
SW-60198720



BRUSHED GOLD
SW-60198721



BLACK TITANIUM
SW-60198722

DESCRIPTIONS

Wall-Mounted Shattaf Mixer

Material: Main body, Concealed Mixer: Brass, Frame: Stainless steel (SUS 304)

Shape: Round

Packaging unit: 1 piece

DIMENSIONS

17.2 x 9 x 13.2 CM

TECHNICAL SPECIFICATION

Maximum operating pressure: 15 bar

Average flow rate: Effective with water outlet

Ceramic cartridge: Yes (25 mm)

With a Brass non-return valve: Yes

Installation type: Wall-mounted

Water inlet/outlet: G 1/2 in

Recommended temperature: 4°C to 80°C

Maximum temperature: 95°C

With embossed box, Easy to install

Non-scratch holder for shattaf: Yes

APPLICATIONS

Bathroom

BOX COMPONENTS

- Brass Shattaf Mixer
- Concealed Mixer with Protection box
- Control Lever Handle
- Shattaf Holder
- (SUS 304) Frame
- (SUS 304) Screws
- Fischer wall plug set
- Mounting Rings & Rubbers
- Allen key
- Installation manual

WARRANTY

7 years for concealed mixer

2 years for mixer accessories, mechanical parts and surface

COUNTRY OF ORIGIN

Made in China for HATCH Sanitary



hatch-products.com

HATCH SANITARY

Hatch Sanitary is a trademark owned by MHG

Old Al Kharj Road, Building No. 3533

Riyadh 14511 - 8305

Kingdom of Saudi Arabia

@ info.mhg@marketing-home.com

☎ 800 122 2230